

SMALL  
LUXURY  
HOTELS  
OF THE WORLD

*Independently minded*



# SEVERIN'S

THE ALPINE RETREAT



## Relaxed Chalet-style Luxury



Welcome to Severin\*s – The Alpine Retreat in Lech am Arlberg!

Nestled in the heart of one of the world's largest skiing and hiking regions and a proud member of the "Best of the Alps" Association, our boutique hotel is ideally located in a peaceful setting on the mountainside – with breath taking views of the stunning Lech mountains.

Severin\*s provides for its guests a modern take on the traditional essence of Austria: antique local wood from Tyrol complemented by modern furnishings, expertly selected contemporary art and state-of-the-art technology which together lay the foundations for a simultaneously traditional, cosy and luxurious experience. In the nine beautifully-appointed suites and in the exclusive Residence, guests are invited to relax, unwind and indulge – and to rely on our dedicated staff.

In our beautifully-designed restaurant, the kitchen team prepares exquisite modern dishes, each with an Austrian influence while the hotel cellar is equipped with fine wines from around the world – hand-picked to suit every taste.

At the end of an active day in the mountains, we invite you to fresh and healthy pamper your body and soul in the Severin\*s' luxurious 415 m<sup>2</sup> wellness and spa area. Your individual requirements set the standard for our first-class and personal service, which is available to you at all times. With open friendliness and professional courtesy, we will ensure that your stay is unforgettable – so terrific, in fact, that you will want to return to Severin\*s – The Alpine Retreat time and time again.

We are looking forward to your visit!

*Cecily Smedek*

Cecily Smedek  
Resident Manager





## THE ALPINE RETREAT

*Setting new standards in luxury holidays*



Lech am Arlberg is regarded as the birthplace of winter sports. Situated in a blissful setting, this boutique hotel offers first-class service for your comfort. With nine suites, an exclusive Residence, a restaurant, bar and lounge as well as a wellness and spa area, this mountain retreat is the ideal place for your luxury winter escape – on your own or with the whole family!

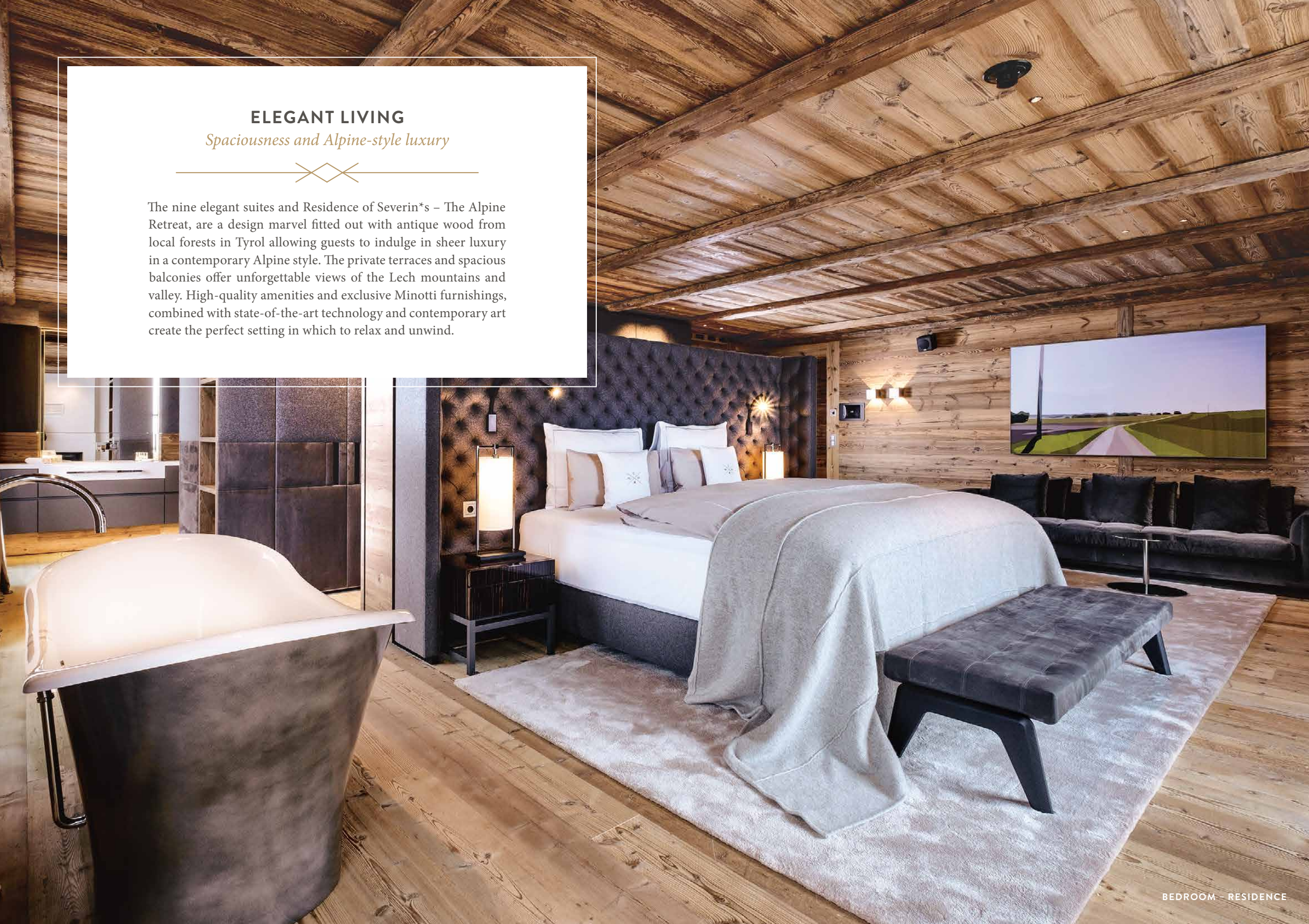


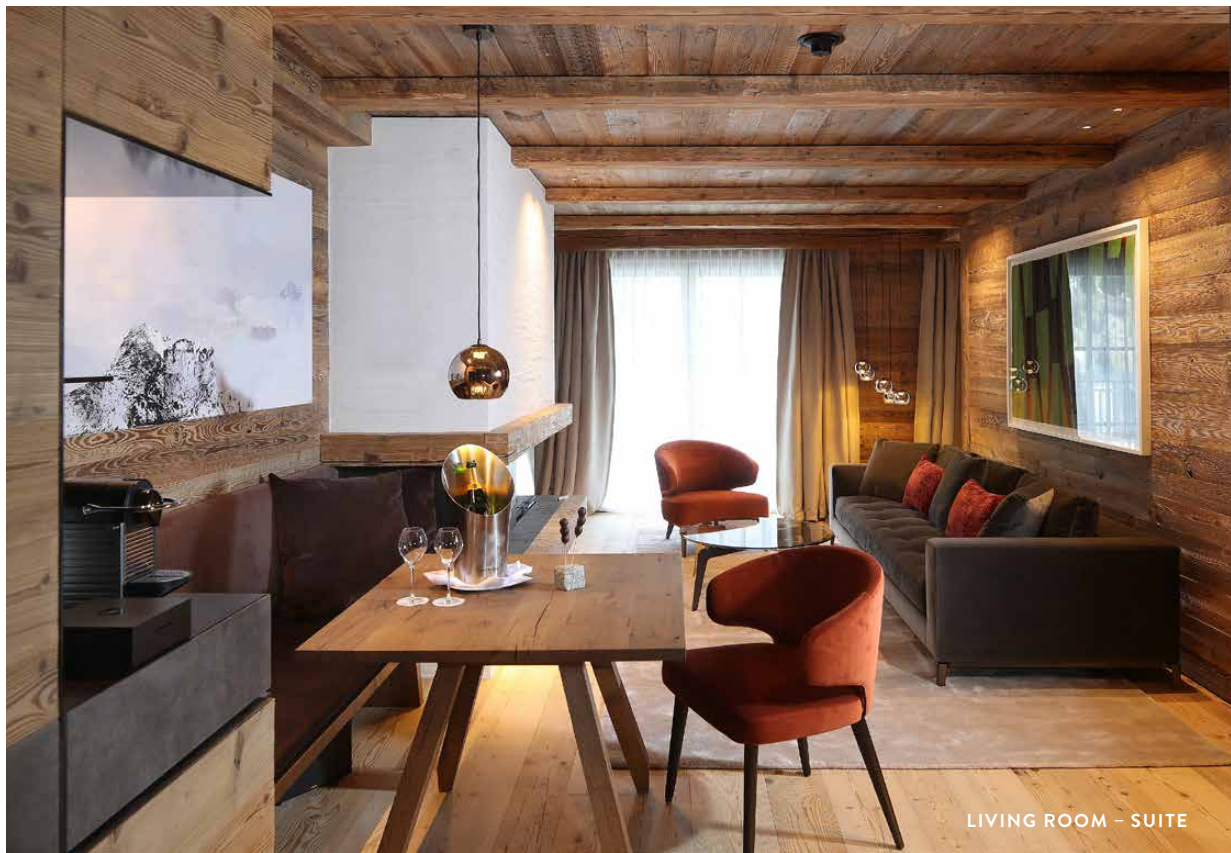
## ELEGANT LIVING

*Spaciousness and Alpine-style luxury*

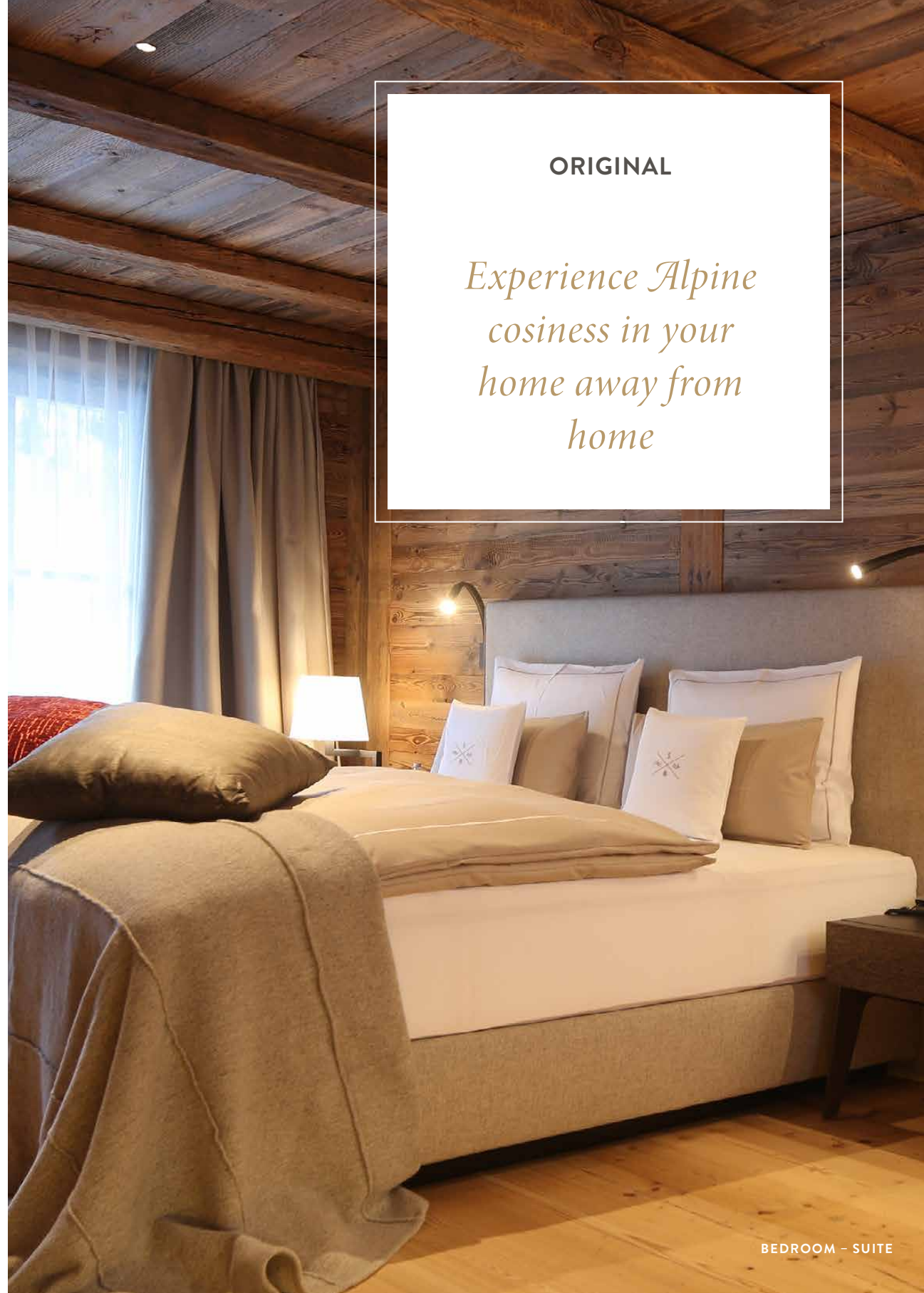


The nine elegant suites and Residence of Severin\*s – The Alpine Retreat, are a design marvel fitted out with antique wood from local forests in Tyrol allowing guests to indulge in sheer luxury in a contemporary Alpine style. The private terraces and spacious balconies offer unforgettable views of the Lech mountains and valley. High-quality amenities and exclusive Minotti furnishings, combined with state-of-the-art technology and contemporary art create the perfect setting in which to relax and unwind.





LIVING ROOM - SUITE



ORIGINAL

*Experience Alpine  
cosiness in your  
home away from  
home*

BEDROOM - SUITE



CHILDREN'S AREA - FAMILY SUITE

## UNIQUE AND EXCLUSIVE

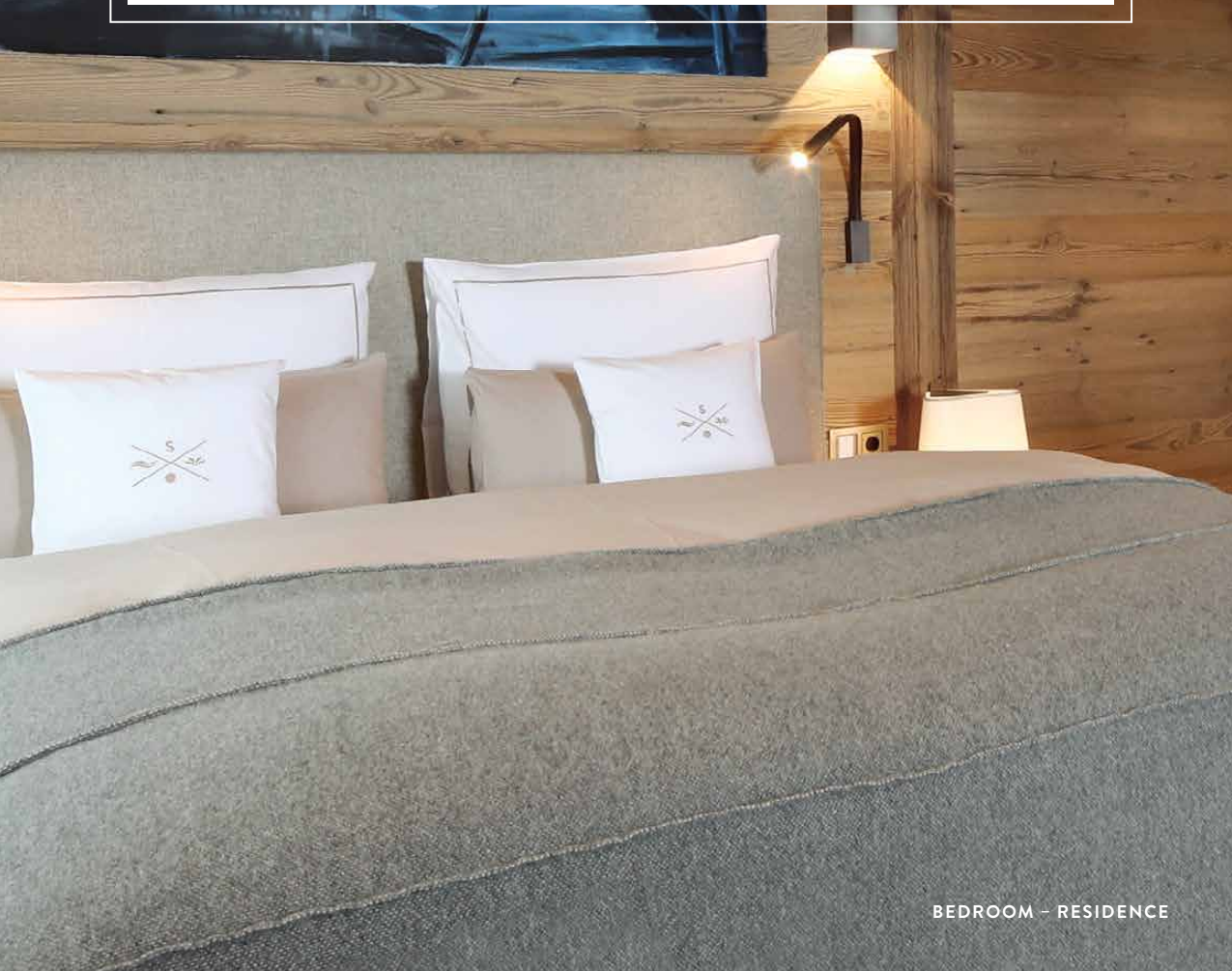
### *Severin\*s - The Alpine Retreat Residence*



The 423 m<sup>2</sup> Residence extends over two floors, conveniently accessible using a private lift which also connects with the gym and spa area. Its living, dining and fully-equipped cooking area is a spacious 110 m<sup>2</sup> and the Chef can provide private dining for groups on request. The master bedroom enjoys a fireplace, free-standing bath and stunning views of the mountains – and there are three further bedrooms as well as a private cinema, personal ski room and a hot tub on its private terrace. The Residence is ideal for families, and dogs are also welcome.



LIVING ROOM - RESIDENCE



BEDROOM - RESIDENCE



KITCHEN - RESIDENCE

## RELAXATION AND FITNESS

*For the well-being of body and soul*



The wellness and spa area at Severin\*s – The Alpine Retreat extends over 415 m<sup>2</sup>. The beauty salon and massage room – also suitable for couple treatments – offer an extensive spa and beauty menu, whilst the fitness room – furnished with Technogym equipment – leaves no fitness wish unfulfilled. The 12.5-metre indoor pool with counter-current, waterfall and hot tubs ensures active relaxation and is complemented by two saunas, a steam bath and an infrared cabin – the perfect way to end a long day on the slopes.





**CULINARY ART**  
*Fine cuisine à la carte*



Severin\*s welcoming restaurant has at its heart a typically Austrian ‚Stube‘ or tiled stove. Here, we serve innovative, modern and sophisticated cuisine. The expert kitchen team places great importance on the use of local produce in their dishes. At breakfast, lunch and dinner, you can experience traditional Austrian cuisine paired with tempting and refined flavours from around the globe. Our restaurant is also open to non-residents.

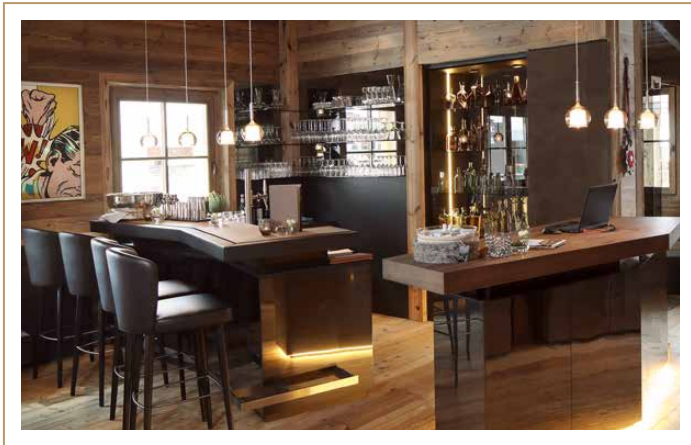






## ENJOYMENT AND RELAXATION

*In the bar and lounge*



Regional, yet cosmopolitan – our bar and lounge encourages guests to sit back, relax and enjoy the evening with lively conversation and well-chosen drinks. Our bar menu offers something for every occasion and mood. The atmosphere in Lech am Arlberg is simply unique, providing the perfect setting for many an enjoyable hour in good company.





## FAR AWAY FROM EVERYDAY

*The hotel's wine cellar*



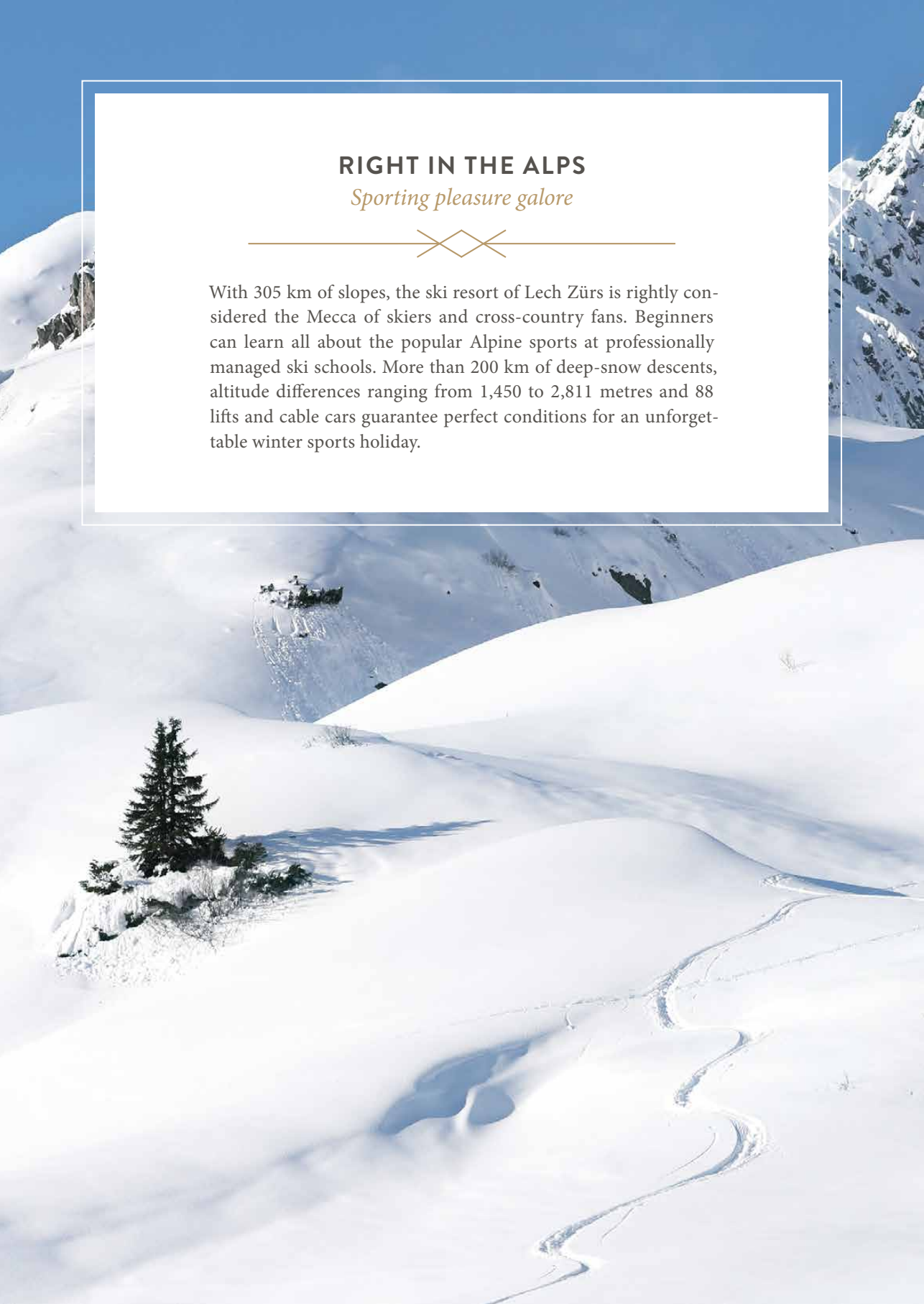
Enjoying wine means taking the time really to savour the moment. In our modern, stylish wine cellar, we present a wide range from Austria and all over the world as well as precious and rare vintages to tickle your taste buds. Our cellar is renowned throughout Lech am Arlberg as an outstanding venue for the authentic enjoyment of fine wines. This state-of-the-art wine cellar is also available as an event location. We look forward to welcoming you soon.



## RIGHT IN THE ALPS

*Sporting pleasure galore*

With 305 km of slopes, the ski resort of Lech Zürs is rightly considered the Mecca of skiers and cross-country fans. Beginners can learn all about the popular Alpine sports at professionally managed ski schools. More than 200 km of deep-snow descents, altitude differences ranging from 1,450 to 2,811 metres and 88 lifts and cable cars guarantee perfect conditions for an unforgettable winter sports holiday.



# From Sylt to the Alps

DISCOVER OUR SEVERIN'S HOUSES

## SEVERIN'S

RESORT & SPA



### HOME AWAY FROM HOME

*Ultimate comfort with no compromises*

In its exclusive setting in the picturesque village of Keitum, the Severin's Resort & Spa offers precisely the comfort that you expect from your stay on Sylt. Treat your taste buds in our Tipken's and Hoog restaurants or take a little time to relax and recharge your batteries in our 2,000 m<sup>2</sup> spa area.

[WWW.SEVERINS-SYLT.DE/EN](http://WWW.SEVERINS-SYLT.DE/EN)

## LANDHAUS SEVERIN'S

MORSUM KLIFF



### CLOSE TO NATURE & IDYLIC

*Experience Sylt as it was originally*

Morsum on Sylt is the place to enjoy life and become one with nature. The island's sweeping heath landscapes and the Wadden Sea are right outside the door of the cosy Landhaus Severin's Morsum Kliff. Enjoy freshly-prepared local specialities in our in-house restaurant, recover from the day-to-day stresses of modern life and discover Sylt as it was originally.

[WWW.LANDHAUS-SEVERINS.DE](http://WWW.LANDHAUS-SEVERINS.DE)

# SEVERIN'S

RESORT & SPA TEGERNSEE

OPENING  
in 2024



## DIVE IN & DISCOVER

*Feel-good atmosphere in a unique mountain scenery*



The new Severin\*s Resort & Spa at the Tegernsee lake enchants at first sight – glistening water and the unique view of the fascinating mountain world of the Alpine foothills ensure your holiday is a special experience. Enjoy your stay on the popular Seestraße and experience the breathtaking nature of Bavaria.

[WWW.SEVERINS-TEGERNSEE.DE](http://WWW.SEVERINS-TEGERNSEE.DE)

# LOUIS HOTEL



## ELEGANT & CENTRAL

*Experience design in a relaxed atmosphere*



The charming LOUIS Hotel with its 72 stylishly designed rooms is located directly at the Viktualienmarkt in the heart of Munich city centre. The LOUIS Grillroom – the LOUIS Hotel's restaurant – has been a fixture of Munich's gastronomy scene for a long time already. For a perfect start to your day, we treat you to our Viktualienmarkt Breakfast with a direct view out over the market. In summer and in winter alike, we are delighted to welcome you to our LOUIS Roof Terrace – still an insider tip even years later.

[WWW.LOUIS-HOTEL.COM/EN](http://WWW.LOUIS-HOTEL.COM/EN)



For further information, please visit:  
[www.severins-lech.at/en](http://www.severins-lech.at/en)

Version: 12/2022

Severin\*s Lech GmbH  
Management und operation  
ATLANTIC Hotels  
Stubenbach 273  
6764 Lech/Arlberg, Austria  
Telefon: +43 5583 33 907 0  
[info@severins-lech.at](mailto:info@severins-lech.at)

We look forward to welcoming you!



Photos: Tom Kohler, Axel Steinbach, Michael Magulski, Redeleit und Junker GmbH



SMALL  
LUXURY  
HOTELS  
OF THE WORLD

*Independently minded*

[WWW.SEVERINS-LECH.AT/EN](http://WWW.SEVERINS-LECH.AT/EN)