

SMALL  
LUXURY  
HOTELS  
OF THE WORLD



# SEVERIN'S

THE ALPINE RETREAT







*Relaxed Chalet-style Luxury*

❁❁ MICHELIN 2024



Welcome to Severin\*s – The Alpine Retreat in Lech am Arlberg.

Nestled in the heart of one of the world's largest skiing and hiking regions and a proud member of the "Best of the Alps" Association, our boutique hotel is ideally located in a peaceful setting on the mountainside – with breath taking views of the stunning Lech mountains.

Experience authentic Austrian luxury, interpreted in a modern way: Cosy, antique Tyrolean wood combined with selected furnishings, curated contemporary art and the latest technology form the base for a unique ambience that inspires. During your stay our kitchen team will serve you culinary delicacies that are inspired by the region and presented in a modern way. In addition our wine cellar offers rare treasures, exquisite Austrian and international wines to complete the culinary concept.

To ensure that your relaxation is nothing less than excellent, we offer a spacious 415 m<sup>2</sup> spa and wellness area featuring a variety of saunas, a beautiful pool, and a fitness area. Pamper your body and soul with this offer or start the day in a sporty way before you go skiing. My team and I are passionate hosts and always strive to offer you an authentic, first-class service during your stay with us.

We always focus on professionalism and reliability and ensure that you have an unforgettably wonderful stay – a stay that we hope will encourage you to return time and again to our Severin\*s The Alpine Retreat.

We are looking forward to your visit!

Your host  
Paul Gründemann







## THE ALPINE RETREAT

*Authentic feel good place*



Lech am Arlberg is regarded as the birthplace of Alpine winter sports. In a quiet location, the retreat offers you a first-class feel-good service. With nine suites, a chalet, a restaurant, a bar and lounge as well as a spa and wellness area, the alpine retreat is the ideal place for your luxurious stay in a beautiful mountain-scape – also for the whole family!





## A SENSE OF WELL-BEING

*Spaciousness and luxury in alpine style*

The nine elegant suites and the Chalet Residence of Severin\*s – The Alpine Retreat, are a design marvel fitted out with antique wood from local forests in Tyrol allowing guests to indulge in sheer luxury in a contemporary Alpine style. The private terraces and spacious balconies offer unforgettable views of the Lech mountains and valley. High-quality amenities and exclusive Minotti furnishings, combined with state-of-the-art technology and contemporary art create the perfect setting in which to relax and unwind.







LIVING ROOM - SUITE



CHILDREN'S AREA - FAMILY SUITE



GENUINE AND  
AUTHENTIC

*Experience alpine  
cosiness in your home  
away from home*

BEDROOM - SUITE



## EXCLUSIVE AND UNIQUE

### *Severin\*s - The Alpine Retreat Chalet Residence*

The over 400 m<sup>2</sup> of living space of the chalet extend over two levels, which you can comfortably reach via the private lift, also connecting you to the spa & wellness area. The living, dining and cooking area of approx. 110 m<sup>2</sup> and the four bedrooms with their own bathrooms are spacious. In the bedroom with fireplace and stand-alone bathtub, you will experience a very special view of the magnificent mountain world. The private theatre, your own ski room and the jacuzzi on the private terrace with panoramic mountain views also ensure an exclusive relaxation experience. The chalet is perfect for families, and is also suitable for those travelling with a dog.



BEDROOM - CHALET RESIDENCE



LIVING ROOM - CHALET RESIDENCE



KITCHEN - CHALET RESIDENCE



## PURE RELAXATION

*for body, mind and soul regeneration*

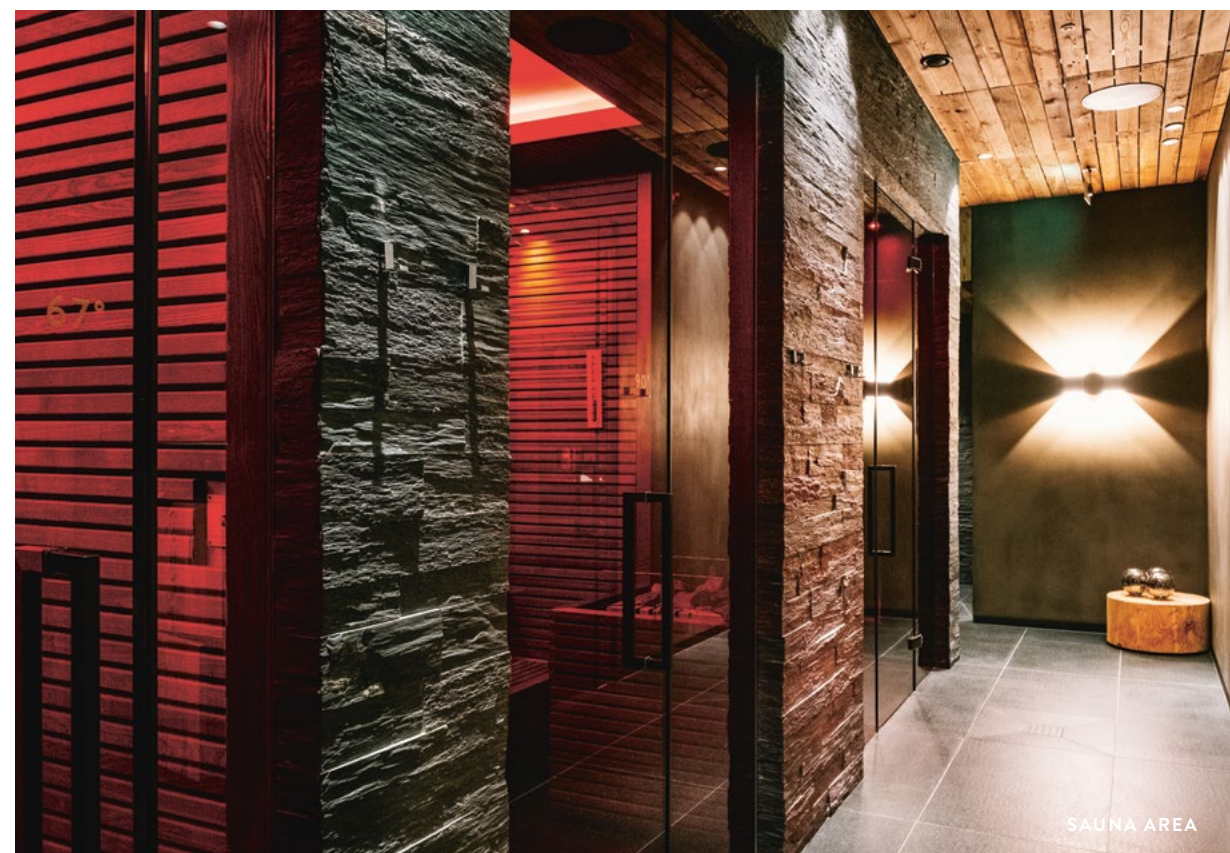
The spacious spa and wellness area covers an overall size of 415 m<sup>2</sup> and offers all the SPA heart desires. Relax in the 12.5 metre indoor pool with jet stream system, waterfall and underwater whirlpool loungers or in the sauna area with a 67 °C sauna, a 90 °C sauna, a steam bath and an Infrared cabin, as well as an ice fountain and two multi-experience showers.

In our 60 m<sup>2</sup> fitness area, sports lovers will also find state-of-the-art Technogym equipment for cardio and weight training.

On request and subject to availability, we offer you some wonderful, relaxing massage and beauty treatments.

LA BIOSTHETIQUE®  
PARIS

WELLNESS AREA



SAUNA AREA

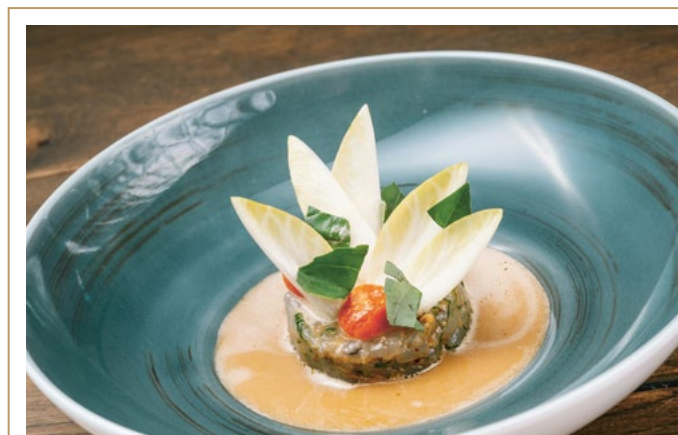


FITNESS AREA





**CULINARY**  
*Alpine fine dining*



In our restaurant, we serve excellent cuisine characterised by the balance and the perfect combination of excellent, local products and the passionate art of cooking.

Our dishes are therefore customised to reflect the connection to the scenic natural surroundings and the region. We are pleased to welcome external guests on request and subject to availability.







## ENJOY AND RELAX

*in bar and lounge*



Lean back, relax and enjoy the time with a good conversation and a selection of excellent drinks.

The atmosphere is unique in Lech am Arlberg and the perfect setting for a cosy time by the fire in the lounge or at the bar.

With selected champagnes and wines, you can enjoy a glass to round off a wonderful day, or warm up with a hot tea and coffee after an adventure in the snow. You can also enjoy an aperitif here before a visit to the restaurant or end the evening with a special drink.







## FAR AWAY FROM EVERYDAY

*The hotel's wine cellar*



Enjoying wine means taking the time really to savour the moment. In our modern, stylish wine cellar, we present a wide range from Austria and all over the world as well as precious and rare vintages to tickle your taste buds. Our cellar is renowned throughout Lech am Arlberg as an outstanding venue for the authentic enjoyment of fine wines. This state-of-the-art wine cellar is also available as an event location. We look forward to welcoming you soon.





## IN THE CENTRE OF THE MOUNTAINS

*A variety of winter activities*

With more than 300 kilometres of slopes, Ski Arlberg is considered a true paradise for passionate skiers and snowboarders. It began as the birthplace of alpine skiing and is now the largest interconnected ski area in Austria - making it one of the five largest ski areas in the world!

In addition to the experienced skiers, even beginners enjoy the popular alpine sport in the region's professional ski schools and will quickly become fans. It is not only the entire ski area that guarantees perfect conditions for an unforgettable winter holiday, as there is no reason not to enjoy sledging or guided winter hikes in Lech.





# SEVERIN'S

RESORT & SPA



## TAKE A BREATH & UNWIND

*Casual luxury with highest quality standards*



Severin's Resort & Spa offers a unique experience of exclusivity and relaxed luxury in the picturesque village of Keitum, nestled by the Wadden Sea. Here, traditional Frisian architecture, spaciousness, and modern comfort come together seamlessly. A wide range of rooms, suites, apartments, and villas, as well as event spaces, ensure that even the most individual desires are met. Unwind in the 2,000 m<sup>2</sup> spa and savor exquisite cuisine at Restaurant Hoog or at Michelin-starred Tipken's by Nils Henkel.

[WWW.SEVERINS-SYLT.DE/EN](http://WWW.SEVERINS-SYLT.DE/EN)

# LANDHAUS SEVERIN'S

MORSUM KLIFF



## CLOSE TO NATURE & IDYLIC

*Experience Sylt in its purest form*



At Landhaus Severin's Morsum Kliff you will experience the impressive seclusion alongside the Wadden Sea Nature Reserve, surrounded by the unique landscape of the Morsum Cliff. Immerse yourself in the tranquillity of nature. The cosy restaurant Landhaus Severin's Morsum Kliff offers creative interpretations of classic dishes, primarily made from regional ingredients. Let yourself be enchanted by the warm atmosphere and culinary variety and discover the beauty of the island in this charming hotel.

[WWW.LANDHAUS-SEVERINS.DE](http://WWW.LANDHAUS-SEVERINS.DE)



# SEVERIN\*S

RESORT & SPA TEGERNSEE



OPENING  
2026/2027

## DIVE IN & DISCOVER

*Feel-good atmosphere in a unique mountain scenery*



The new Severin\*s Resort & Spa at the Tegernsee lake enchants at first sight – glistening water and the unique view of the fascinating mountain world of the Alpine foothills ensure your holiday is a special experience. Enjoy your stay on the popular Seestraße and experience the breathtaking nature of Bavaria.

[WWW.SEVERINS-TEGERNSEE.DE](http://WWW.SEVERINS-TEGERNSEE.DE)

# LOUIS HOTEL



## ELEGANT & CENTRAL

*Experience design in a relaxed atmosphere*



The charming LOUIS Hotel with its 72 stylishly designed rooms is located directly at the Viktualienmarkt in the heart of Munich city centre. The LOUIS Grillroom – the LOUIS Hotel's restaurant – has been a fixture of Munich's gastronomy scene for a long time already. For a perfect start to your day, we treat you to our Viktualienmarkt Breakfast with a direct view out over the market. In summer and in winter alike, we are delighted to welcome you to our LOUIS Roof Terrace – still an insider tip even years later.

[WWW.LOUIS-HOTEL.COM/EN](http://WWW.LOUIS-HOTEL.COM/EN)





For further information, please visit:  
[www.severins-lech.at/en](http://www.severins-lech.at/en)

Version: 11/2024

Severin's Lech GmbH  
Management and operation  
ATLANTIC Hotels  
Stubenbach 273  
6764 Lech/Arlberg, Austria  
Telephone: +43 5583 33 907 0  
[info@severins-lech.at](mailto:info@severins-lech.at)

We look forward to welcoming you!

  
**SEVERIN'S**  
THE ALPINE RETREAT

Photos: Tom Kohler, Axel Steinbach, Michael Magulski, Redeit und Junker GmbH





SMALL  
LUXURY  
HOTELS  
OF THE WORLD

[WWW.SEVERINS-LECH.AT/EN](http://WWW.SEVERINS-LECH.AT/EN)

